

LUXOTICA

# EMPORIO ARMANI



EMPORIO ARMANI FALL/WINTER 2014



FRONT



BACK

## Material Specification

- **VISUAL PANEL (A)**

The structure (cardboard and polystyrene) is covered with Algrodesign 300 gsm cardboard 5 colors offset printed with matt lamination

- **SHELVES (B)**

Clear acrylic 6 mm thickness

490 x 270 x h690 mm



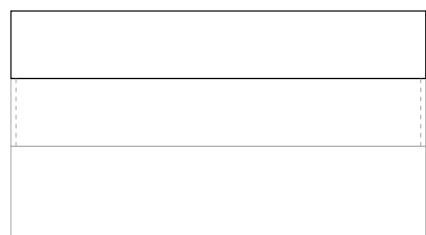
FRONT VIEW



LATERAL VIEW



BACK VIEW



PLAIN VIEW

## Dimensions

- **TOTAL DIMENSION**

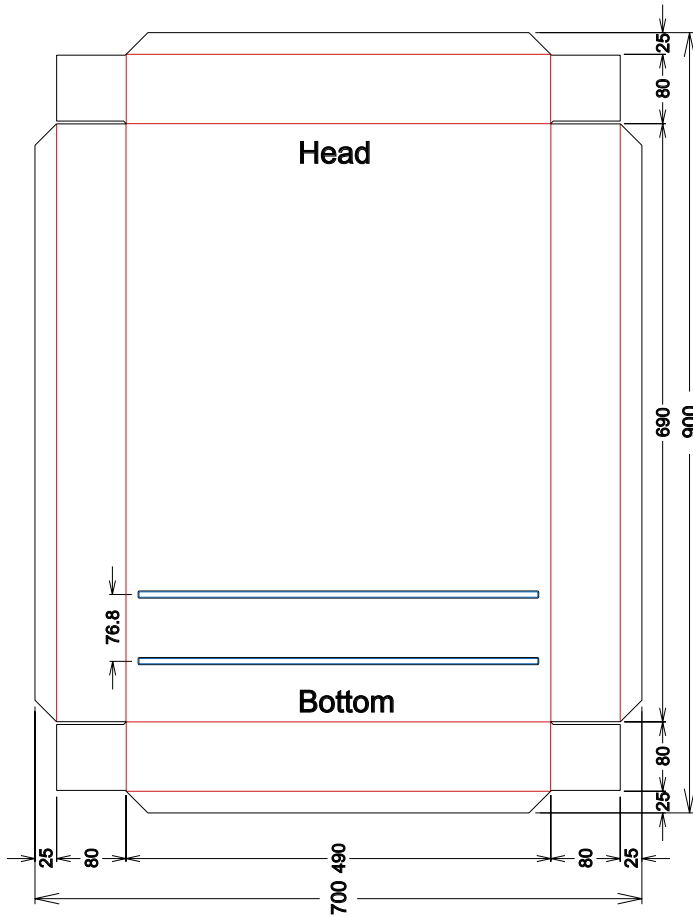
width mm 490  
height mm 690  
depth mm 270

- **VISUAL PANEL (A)**

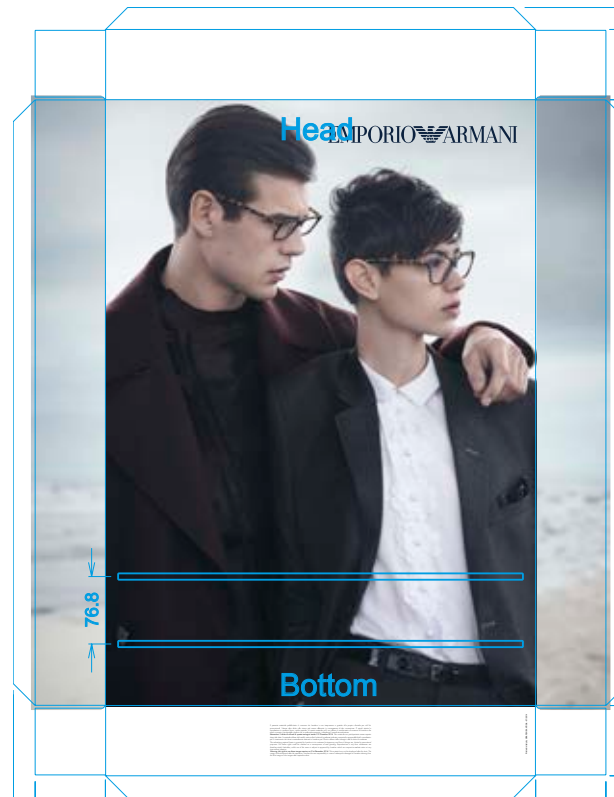
width mm 490  
height mm 690  
depth mm 80

- **SHELVES (B)**

width mm 490  
height mm 151  
depth mm 190



DIE CUT FOR PANEL



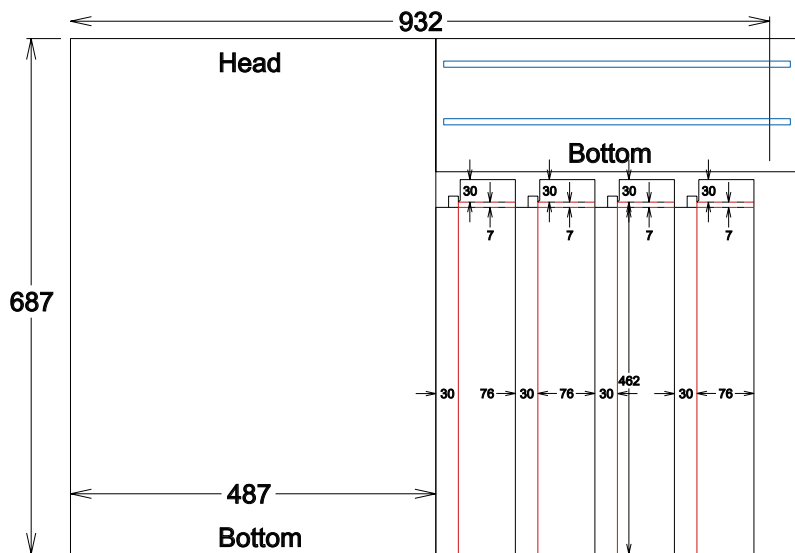
GRAPHICS ON DIE CUT PANEL

• LEGEND •  
**BLACK** = to cut  
**RED** = to fold  
**BLUE** = notes

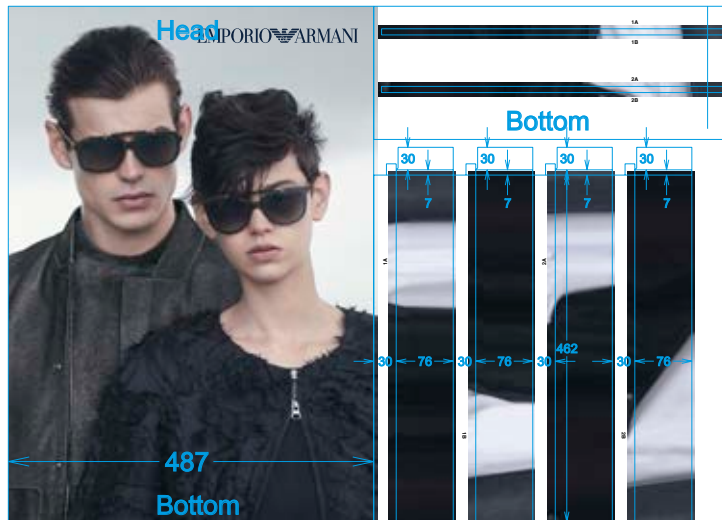
## Visual Panel (A)

- **FRONT PANEL (A)**

Cardboard Algrodesign 300 gsm  
 cardboard 5 colors offset printed with  
 matt lamination  
 Dimensions 700 x 900 mm



DIE CUT FOR PANEL



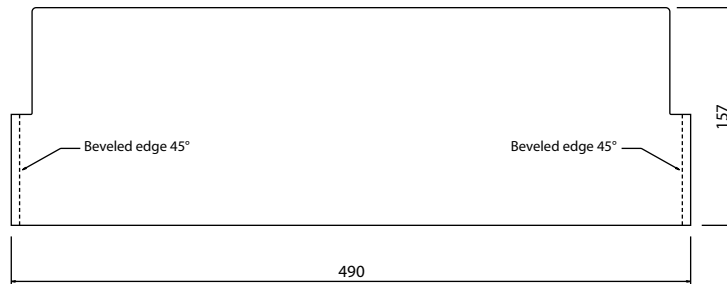
GRAPHICS ON DIE CUT PANEL BACKSIDE

**Visual Panel (A)**

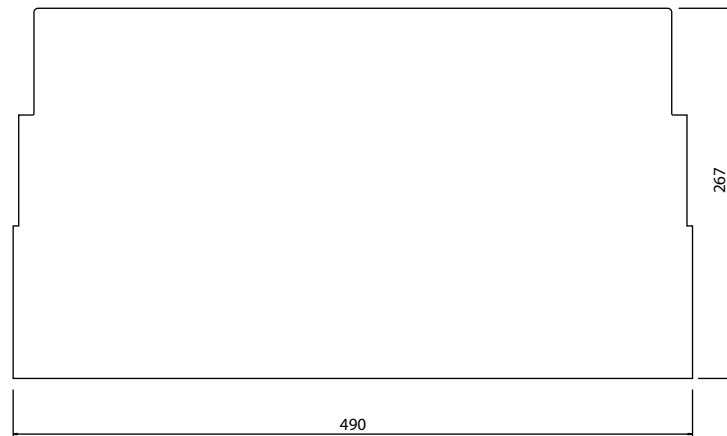
• **BACK PANEL (A)**

Cardboard Algrodesign 300 gsm  
cardboard 5 colors offset printed with  
matt lamination  
Dimensions 932 x 687 mm

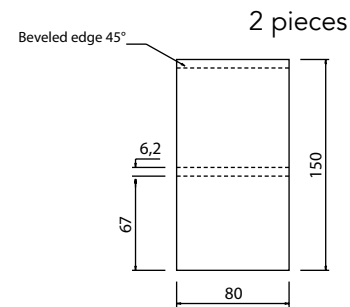
• **LEGEND** •  
**BLACK** = to cut  
**RED** = to fold  
**BLUE** = notes



DIE CUT TOP SHELF



DIE CUT MIDDLE SHELF

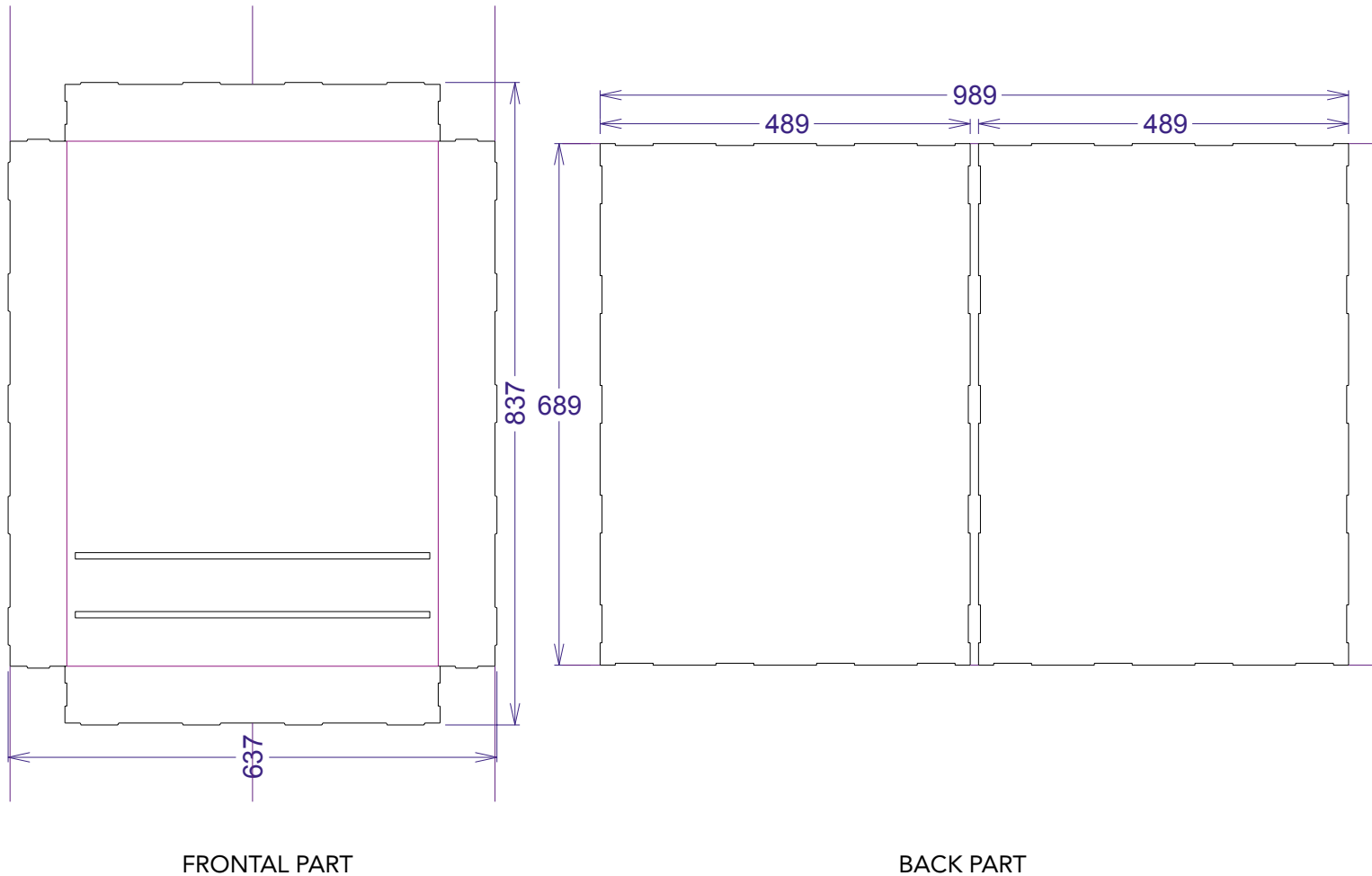


DIE CUT LATERAL PART

• LEGEND •  
**BLACK** = to cut  
**RED** = to fold  
**BLUE** = notes

## Shelves (B)

Clear acrylic 6 mm thickness  
 Dimensions 490 x 267 x h150 mm.



## Die Cut For Internal Components

- **VISUAL PANEL FRONTAL PART (A)**

Cardboard 2,5 mm thick  
Dimensions 837 x 637 mm

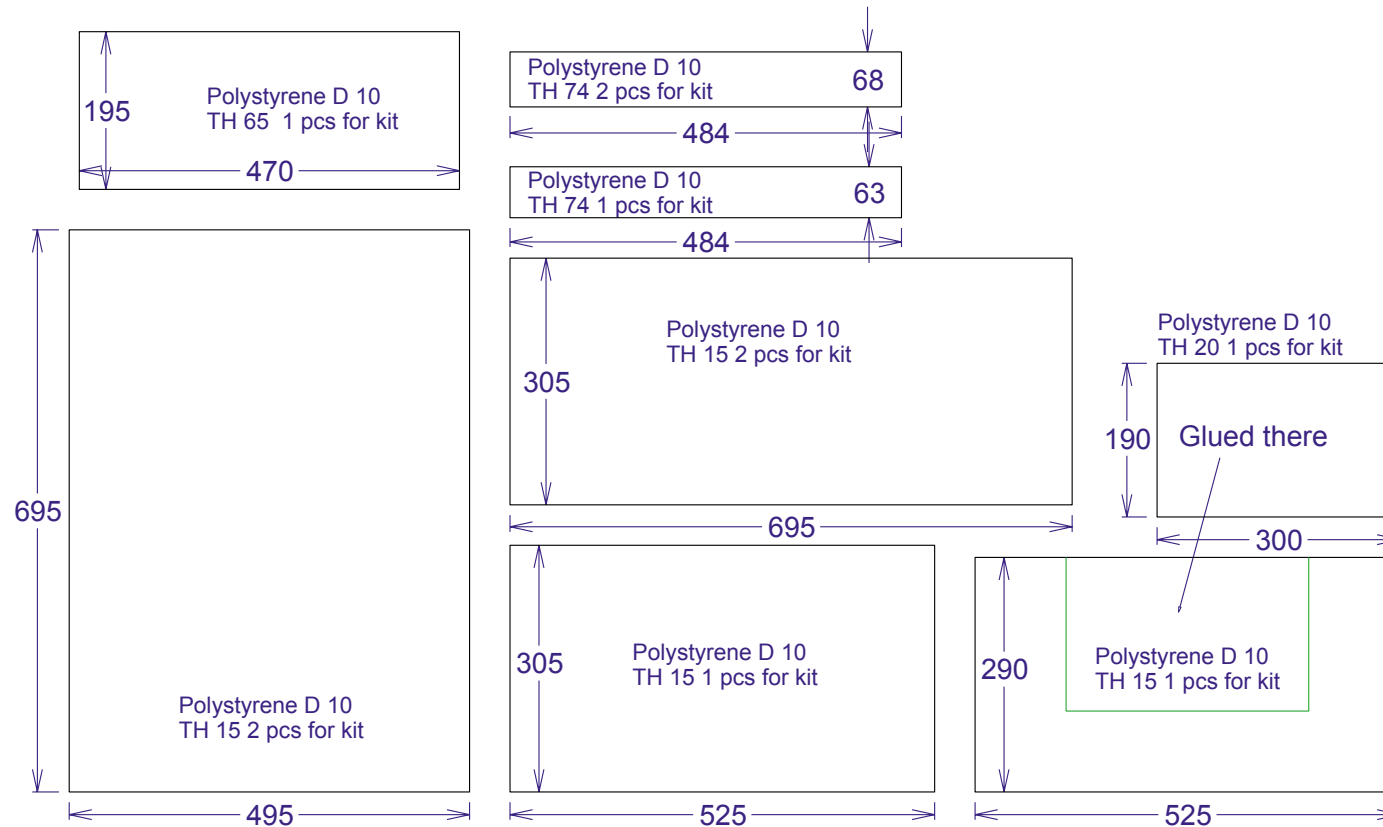
- **VISUAL PANEL BACK PART (A)**

Cardboard 2,5 mm thick  
Dimensions 689 x 489 mm

• **LEGEND** •  
**BLACK** = to cut  
**RED** = to fold  
**BLUE** = notes

## Die Cut For Internal Components

Polystyrene D 10  
Various thicknesses



• LEGEND •  
**BLACK** = to cut  
**RED** = to fold  
**BLUE** = notes



grafiche  
antiga

**Grafiche Antiga SPA**

T. (+39)04236388  
F. (+39)0423638900

graficheantiga.it  
info@graficheantiga.it

SEDE CENTRALE  
Via delle Industrie, 1  
I-31035Crocetta del Montello  
(Treviso)

SEDI  
Milano  
Belluno  
Vicenza

## DOWNLOAD DAL SERVER FTP DI GRAFICHE ANTIGA

### PROCEDURA TRAMITE CLIENT FTP

link: ftp://88.42.229.133

username: luxottica39

password: luxottica39

- Non digitare username e password in maiuscolo.
- I files resteranno a disposizione nel server per 40 giorni dal ricevimento della presente comunicazione.

## DOWNLOAD FROM GRAFICHE ANTIGA FTP SERVER

### FTP CLIENT PROCEDURE

link: ftp://88.42.229.133

username: luxottica39

password: luxottica39

- Digit username and password NOT in capital letters.
- The files can be downloaded for 40 days from the receiving of this communication.

## Download

Download of graphic and technical files